



# Natural is Beautiful

Healthy Shorelines for Healthy Lakes

Melissa Dakers, Habitat & Stewardship Program Manager  
Watersheds Canada



**Watersheds**  
C A N A D A

## Our Mission

We work with landowners, communities, and organizations to protect lakes and rivers through developing effective, transferable, long-term solutions.

Your Lakes. Your Rivers. Your Future.

[watersheds.ca](http://watersheds.ca)





The NATURAL Edge  
Restoring the Ribbon of Life

PLANNING FOR OUR SHORELANDS

# LAKEFRONT ENVIRONMENTAL NET GAIN

These are many things to consider when evaluating a waterfront redevelopment application. Below are recommended best practices for allowing development to proceed while taking steps to protect the natural environment and resilience of a waterfront property.







# Lake environments face challenges

- Increasing development pressures
- Increasing population density
- Increasing resource use
- Decreasing wildlife habitat
- Degrading water quality





From natural, fully vegetated,  
healthy shorelines...



To this...

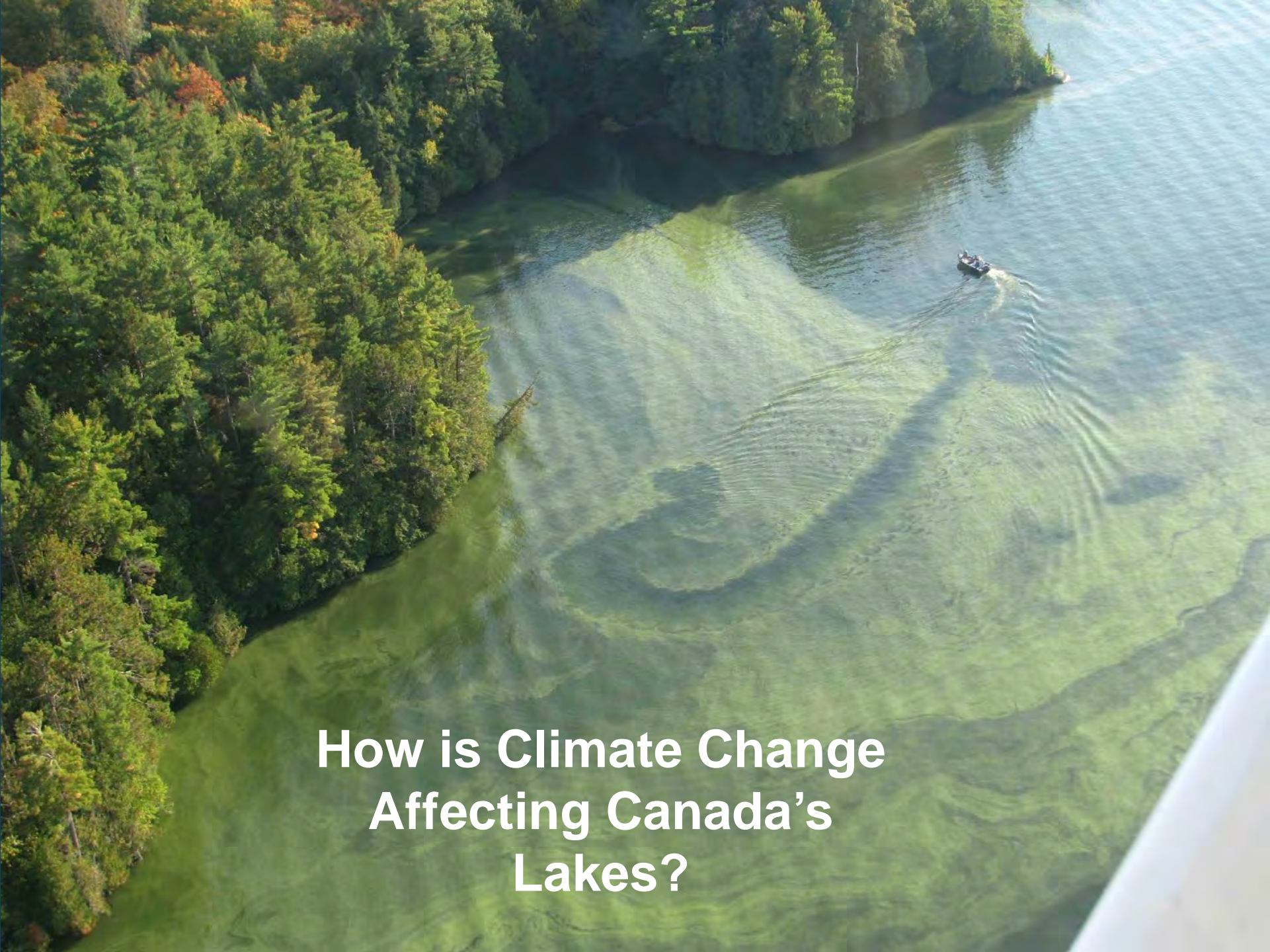




# The Problem Canada's Lakes are Facing








# How is Climate Change Affecting Canada's Lakes?



# Healthy Freshwater Depends on Healthy Shorelands







**Why are Natural Shorelands Important -  
Protect from the Impacts of Climate  
Change**



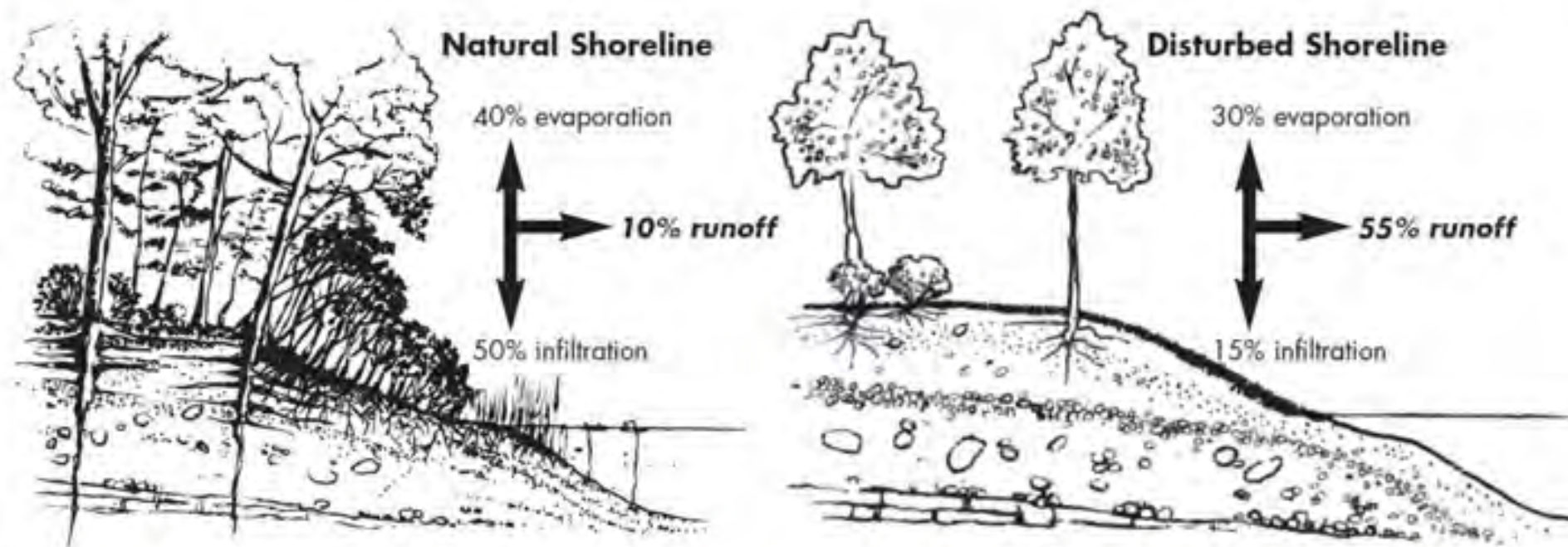


**PEOPLE NEED TO KEEP AT LEAST  
75% OF THEIR SHORELINE NATURAL**

**90% OF AQUATIC SPECIES AND  
70% OF TERRESTRIAL WILDLIFE NEED  
A HEALTHY SHORELINE TO SURVIVE**



# Improves Water Quality



Native vegetation protects water quality from polluted runoff, and helps soil absorb water.

Hard surfaces and reduced vegetation increase runoff and erosion potential, and decrease absorption by the soil.

Natural shorelands promote soil infiltration and subsequent reduction in runoff. Adapted from *Benefits of a Natural Shoreline* by Rideau Valley Conservation Authority. Retrieved from <https://www.rvca.ca/stewardship-grants/shoreline-naturalization/benefits-of-a-natural-shoreline>.





# Stabilizes Soil

Roots hold soil in place, reducing erosion and land loss from:

- Boat wakes
- Waves
- Flooding
- Increased water runoff



Mowed  
Grass

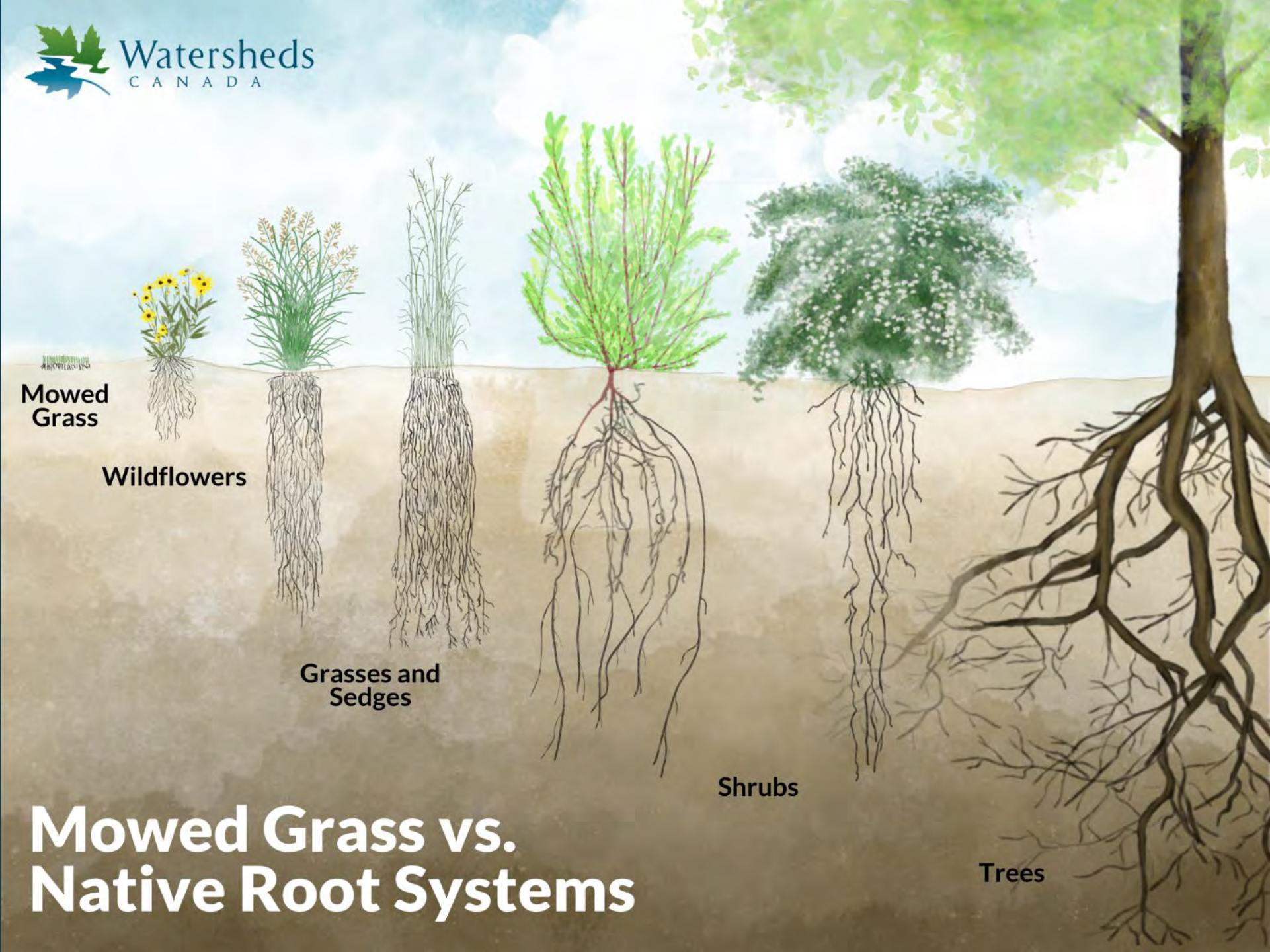
Wildflowers

Grasses and  
Sedges

Shrubs

Trees

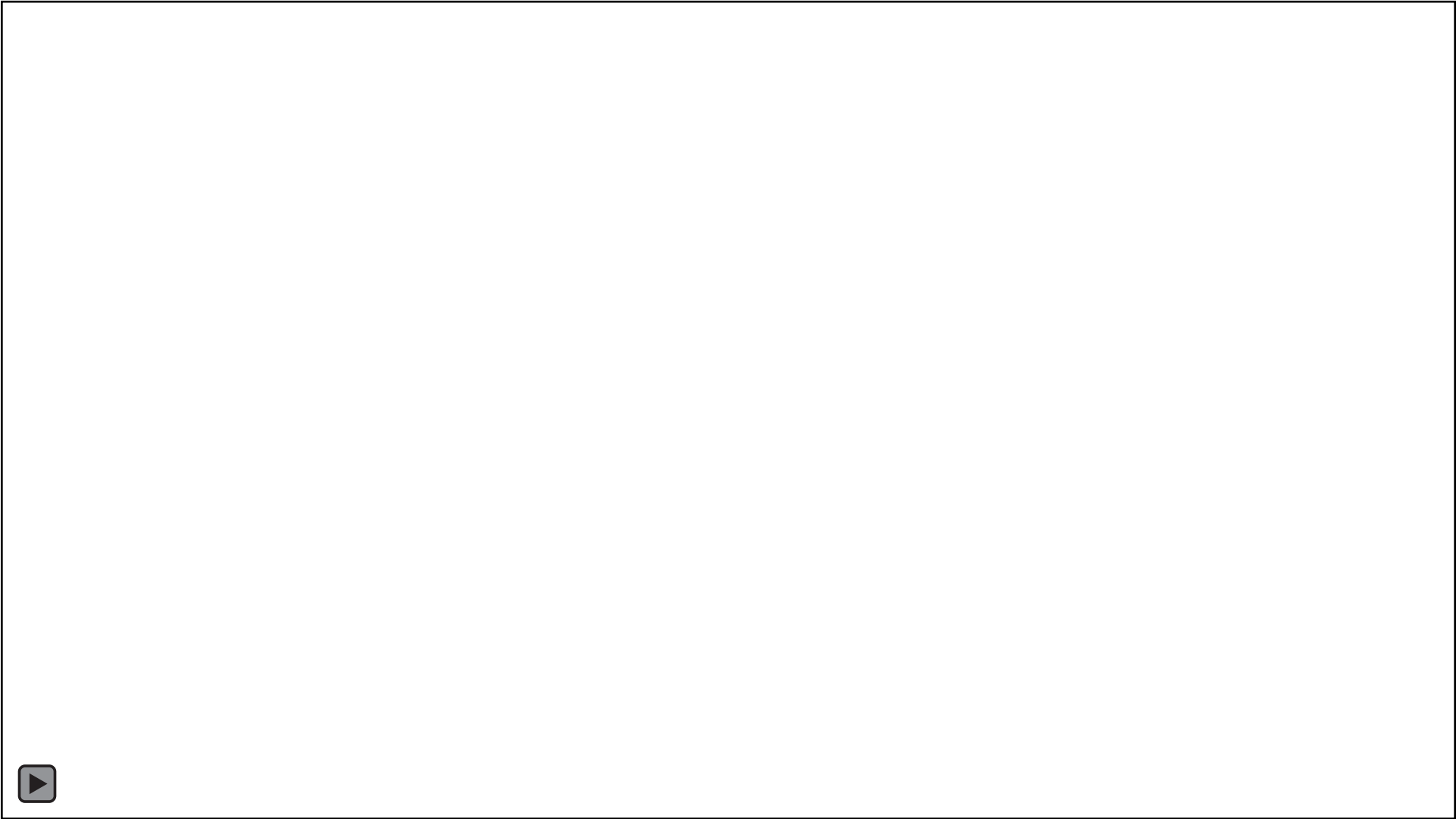
# Mowed Grass vs. Native Root Systems







# A Look Underwater at a Developed Shoreline







# A Look Underwater at a Healthy Shoreline





# What is the Love Your Lake Program?

- Every property on the lake was assessed using a standardized assessment protocol - observation only via boat
  - Structures & docks
  - Erosion control structures
  - Vegetation & habitat
- Landowners will get a personalized property report with details on the state of their shoreline and recommended actions for improving lake health for people and wildlife
- Value Survey results and a Lake Level Report is provided to each lake (with no personal information revealed)





# Personalized Shoreline Property Report

- Free download or purchase a printed copy for \$20
- Generated from assessment data
- Specific to each shoreline property owner
- Recommendations for voluntary actions
- Additional local resources
- Non-regulatory



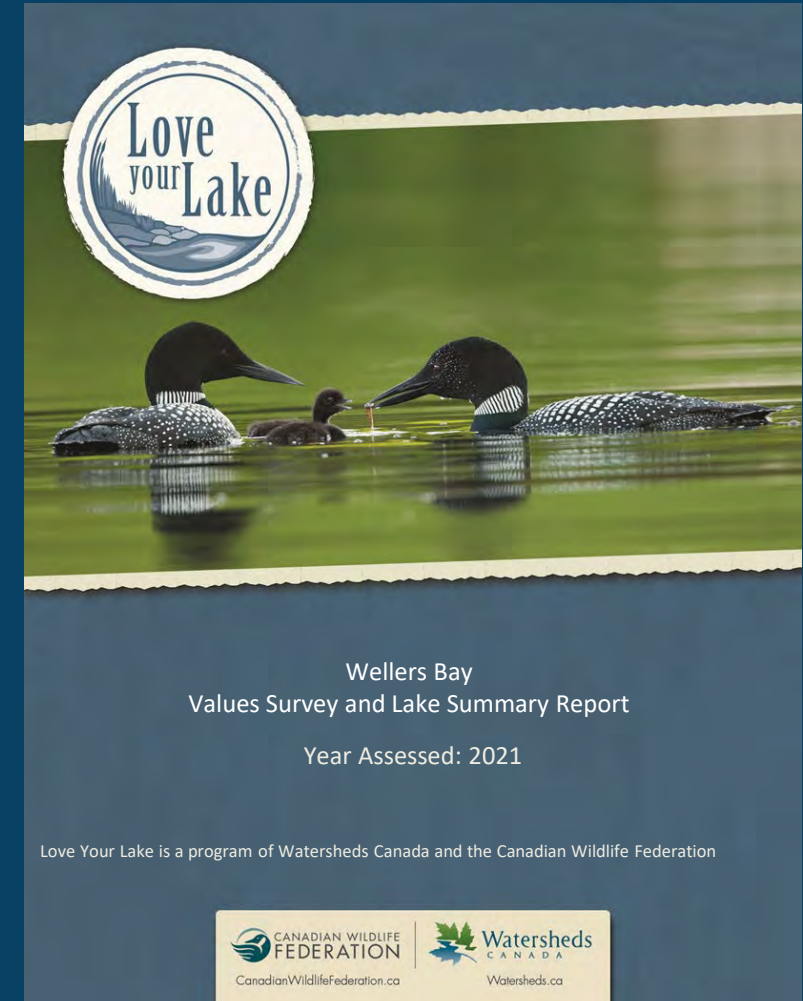
SHORELINE PROPERTY REPORT



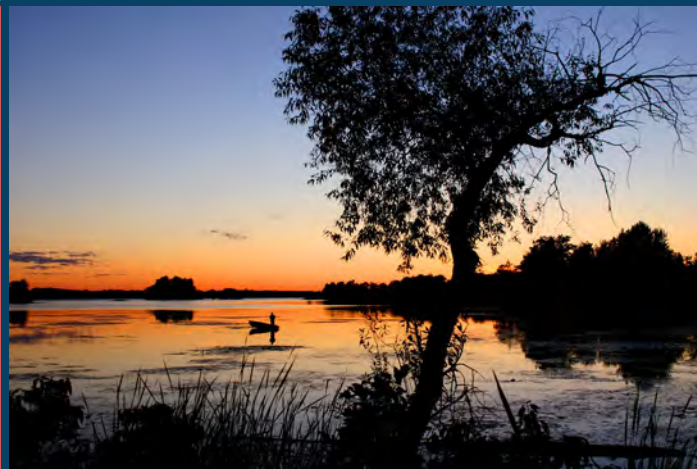


# Value Survey & Lake Summary Report

- Summarizes Values Survey responses and assessment data
- No identification information included (names, addresses)
- Encourages community stewardship actions
- Resource for lake organizations







Targeted education & stewardship

Identification of wildlife habitat for fish, amphibians, etc.

Wildlife habitat improvement and protection projects

Data can be compared over time

Long-term outcomes can easily be evaluated







# Kashwakamak Lake Values Survey Results:

Property Ownership: 593 properties surveyed  
- 60 respondents to the Values Survey

- 53 (88%) seasonal residents
- 6 (10%) permanent residents.
- 5 (8%) own vacant property
- 1 (2%) operate a farm



# Top Recreational Activities Enjoyed

<b>Recreational Activities:</b>	<b># of respondents</b>	<b>% of respondents</b>
• Swimming	58	97%
• Canoeing or Kayaking	55	92%
• Nature Appreciation	49	82%

The most important elements, valued for their impact on personal enjoyment of the lake, included:

**water quality, swimming, and scenery/view.**



# Issues Facing Kashwakamak Lake

- water quality
- shoreline development
- noise pollution

## Top water quality concerns

- Algae and aquatic vegetation
- Bacteria
- Clarity





# Perceived Water Quality Concerns

- 68% perceive water quality to be good
- 15% perceive water quality to be excellent.



Photo credit: J. McIntyre



# LYL Results – 46,503 meters of Shoreline Assessed



Photo credit: KLA website

## Buffer Recommendations:

- 31 properties – create buffer
- 297 properties – expand buffer
- 260 properties – great as is

\*Note: 296 difficult to create 30m buffer

- **Create – 1,274 meters**
- **Expand – 22,900 meters**
- **Great As is – 22,329 meters**



# Top 3 Actions Identified By Shoreline Property Owners



1. Limit Boat Wakes near Shore
2. Provide Education Materials to Property Owners
3. Engage in a Septic Re-Inspection Program

Photo credit: KLA website





**Watersheds**  
C A N A D A



**Thank You!**

**Melissa Dakers,  
Habitat & Stewardship Program Manager  
[dakers@watersheds.ca](mailto:dakers@watersheds.ca)**

Your Lakes. Your Rivers. Your Future.

[watersheds.ca](http://watersheds.ca)